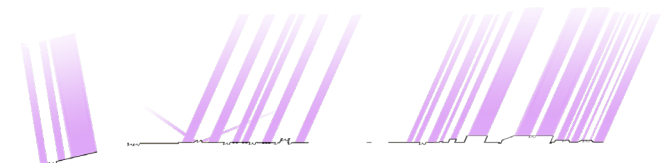
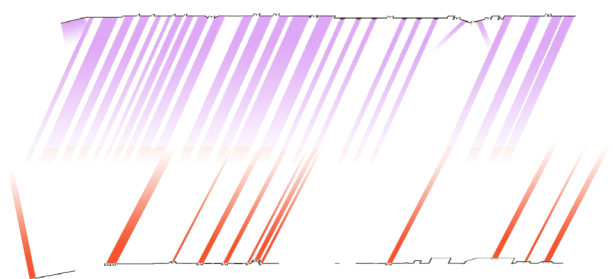


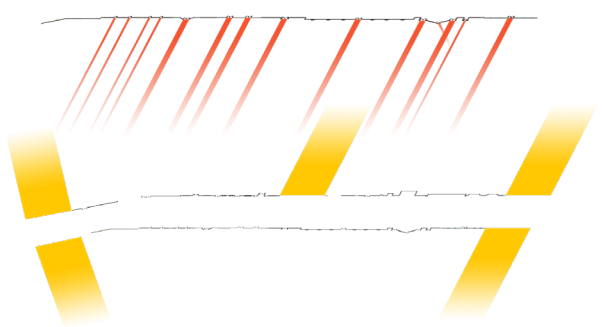
TRANSPARENT WALL VIEWS
(VISUAL CONNECTORS)



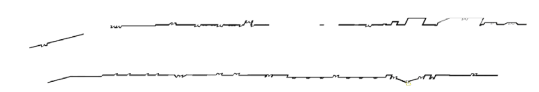
DOORWAYS WITHIN THE WALL



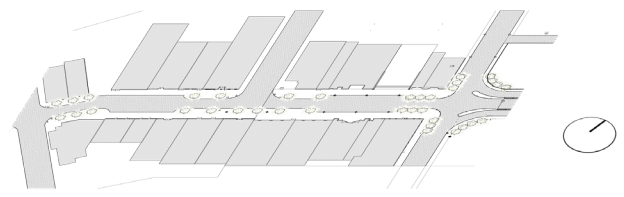
STREET OPENINGS



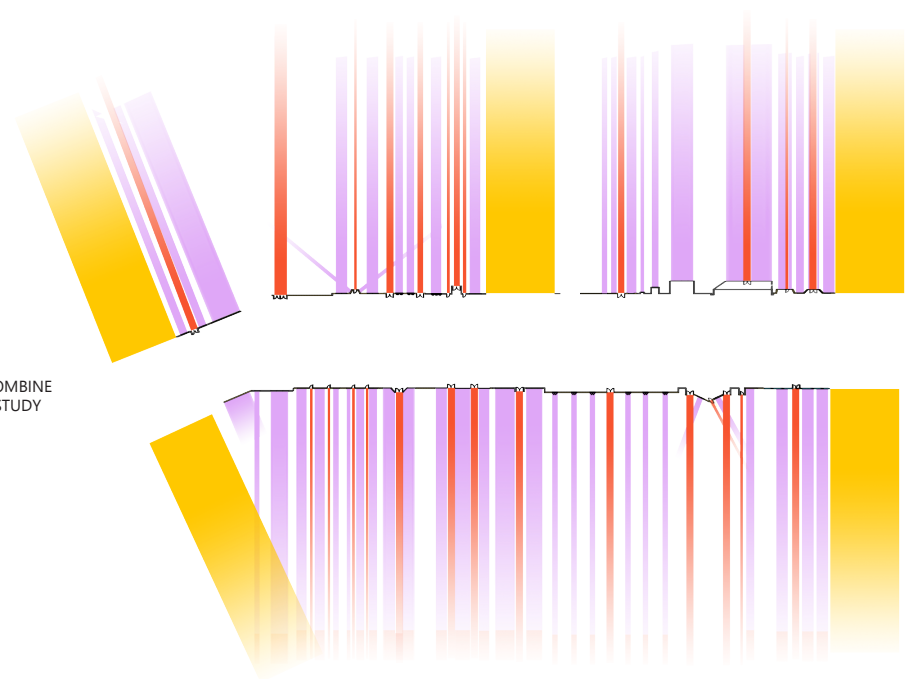
URBAN WALL



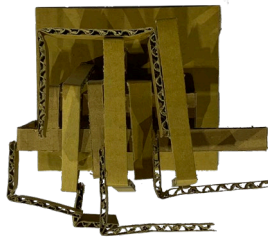
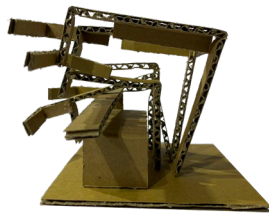
JEFFERSON ST



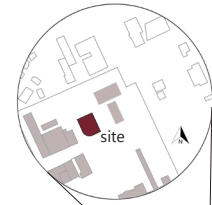
COMBINE
STUDY



CONCEPT AND SITE ANALYSIS: THE URBAN WALL
PROJECT: INTENTIONAL USE OF OPENING (WINDOWS, SKYLIGHTS, DOORS, ETC) TO PROVIDE SPECIFIC VIEWS OF DOWNTOWN LAFAYETTE



GESTURES - EXPLORATION OF A DYNAMIC PUSH AND PULL FACADE



DOWNTOWN 3D MODEL

Urbanistic Push

Comprehensive Studio - Mixed Use Development

Design Excellence Award

 Downtown Lafayette, LA



Retail - Department Store
1-3 Floor



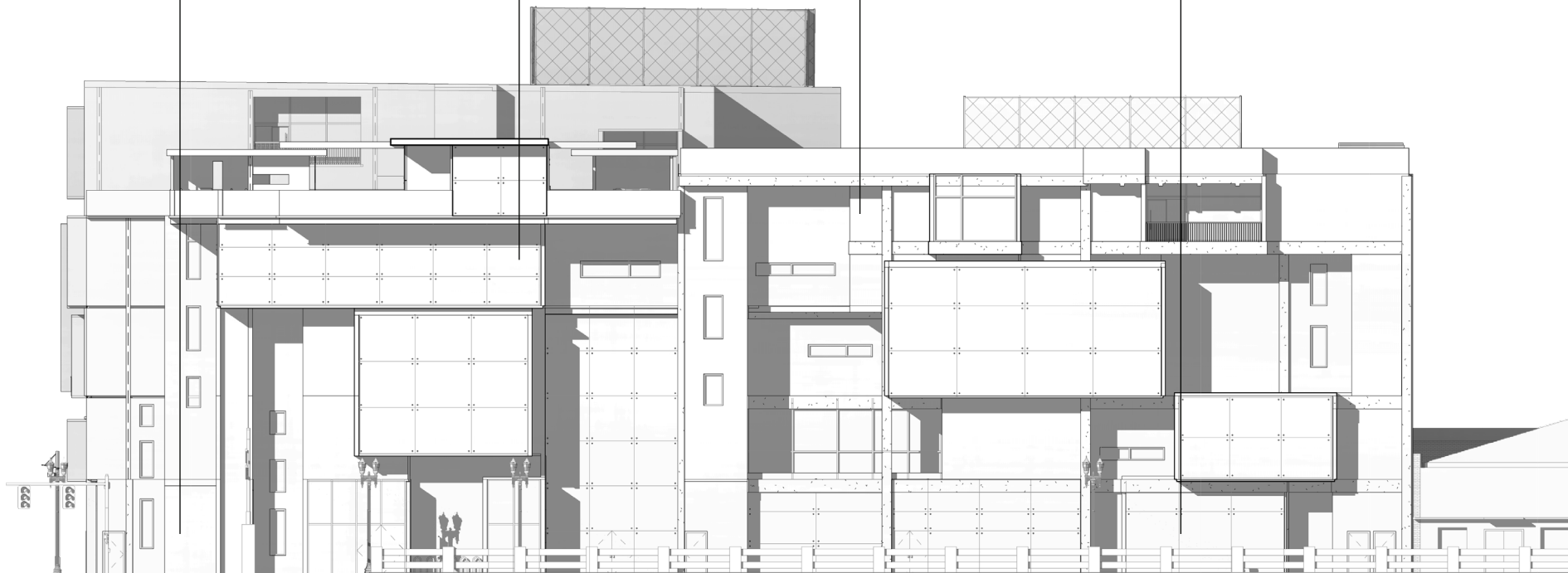
5 Star Restaurant
In/Outdoor | 4-5 Floor



Apartments | 2-6 Floor



Food And Beverage Bar
1-3 Floor



BUILDING ELEVATION A

SENSORY EXPERIENCE WAS PRIMARY IN THIS MID-RISE MIXED USE DEVELOPMENT. THE PROPOSAL SOUGHT THROUGH MATERIAL, PROGRAMMATIC, AND SPATIAL VARIATION, TO CREATE AN ARCHITECTURE THAT UNEXPECTEDLY SHIFTS USERS THINKING FROM THE EVERYDAY AND MUNDANE TO A GREATER SENSE OF SELF-AWARENESS AND JOY.

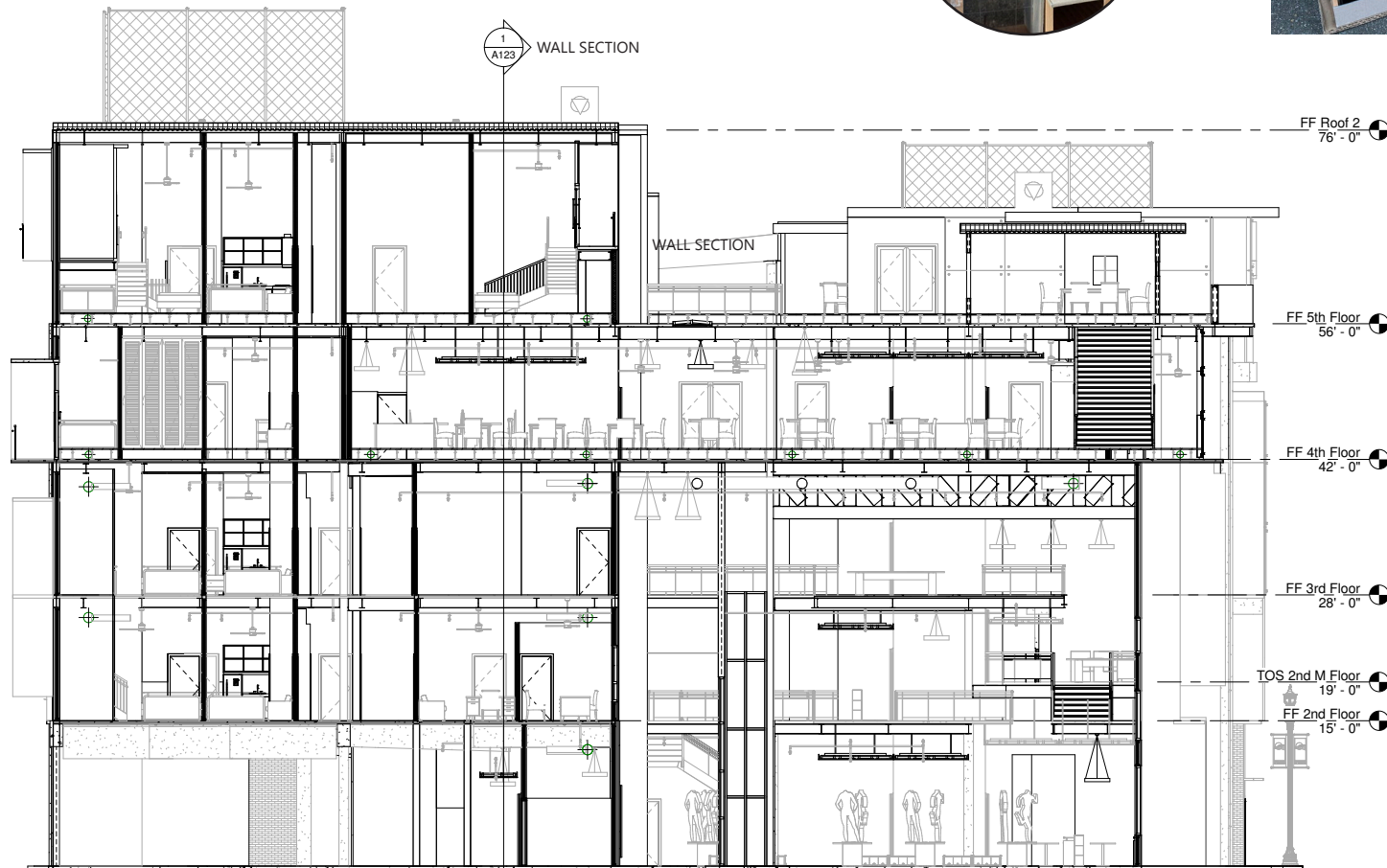


JEFFERSON ST CORNER VIEW

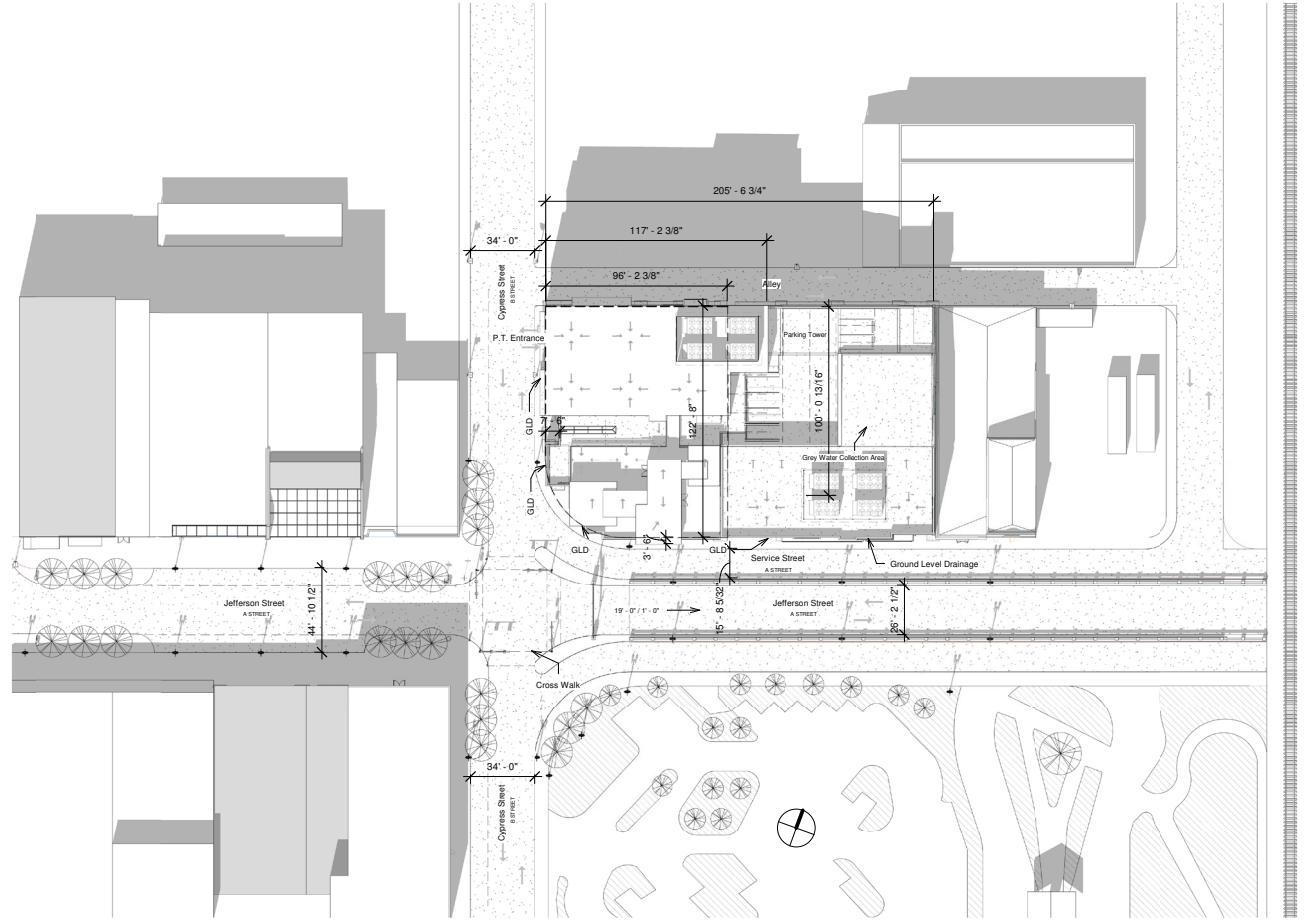
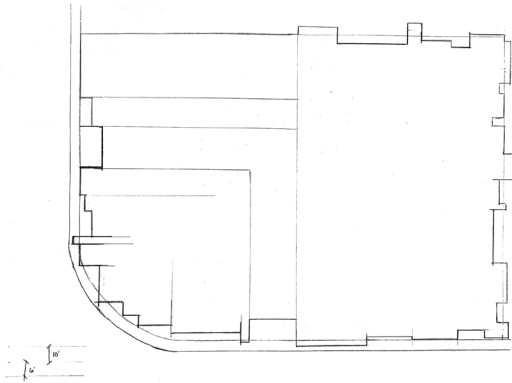
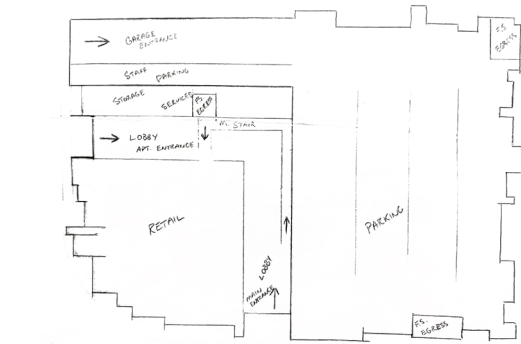


BACKSIDE ALLEY VIEW

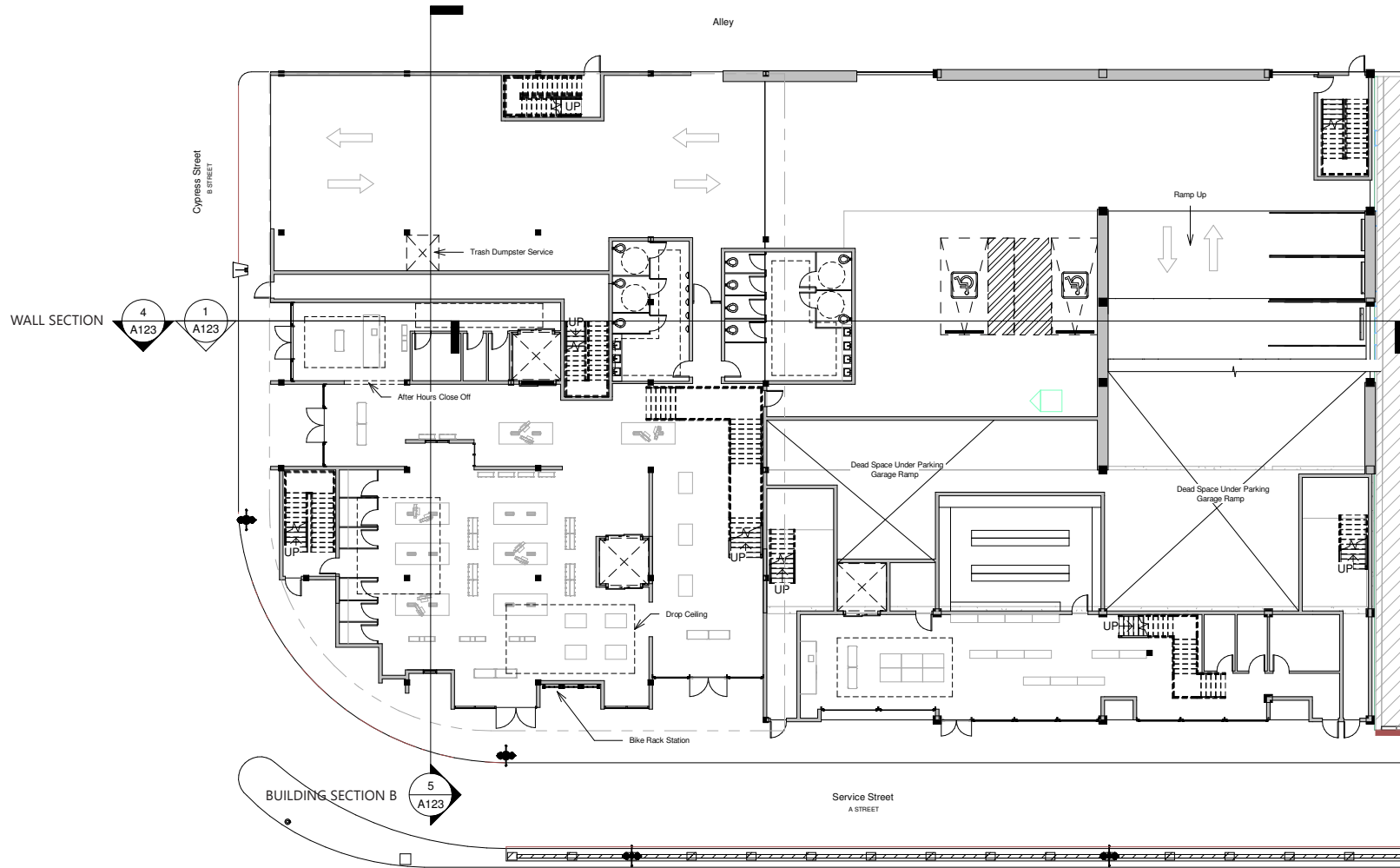
1/4" SCALE BUILDING MODEL



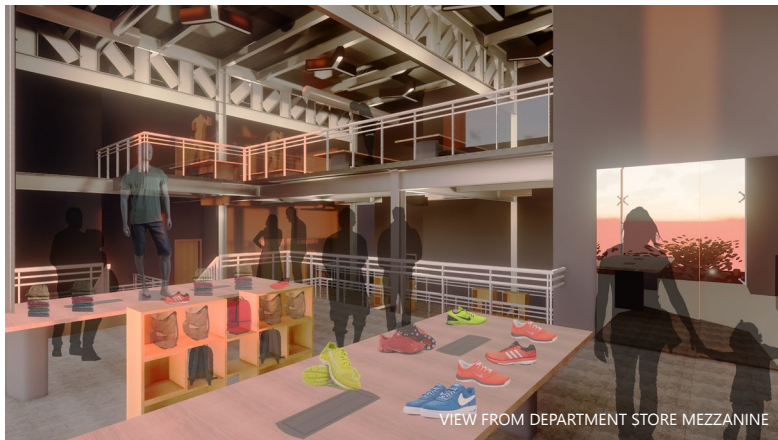
BUILDING SECTION B



OFFICIAL SITE PLAN
SCALE: 1" = 40' - 0"

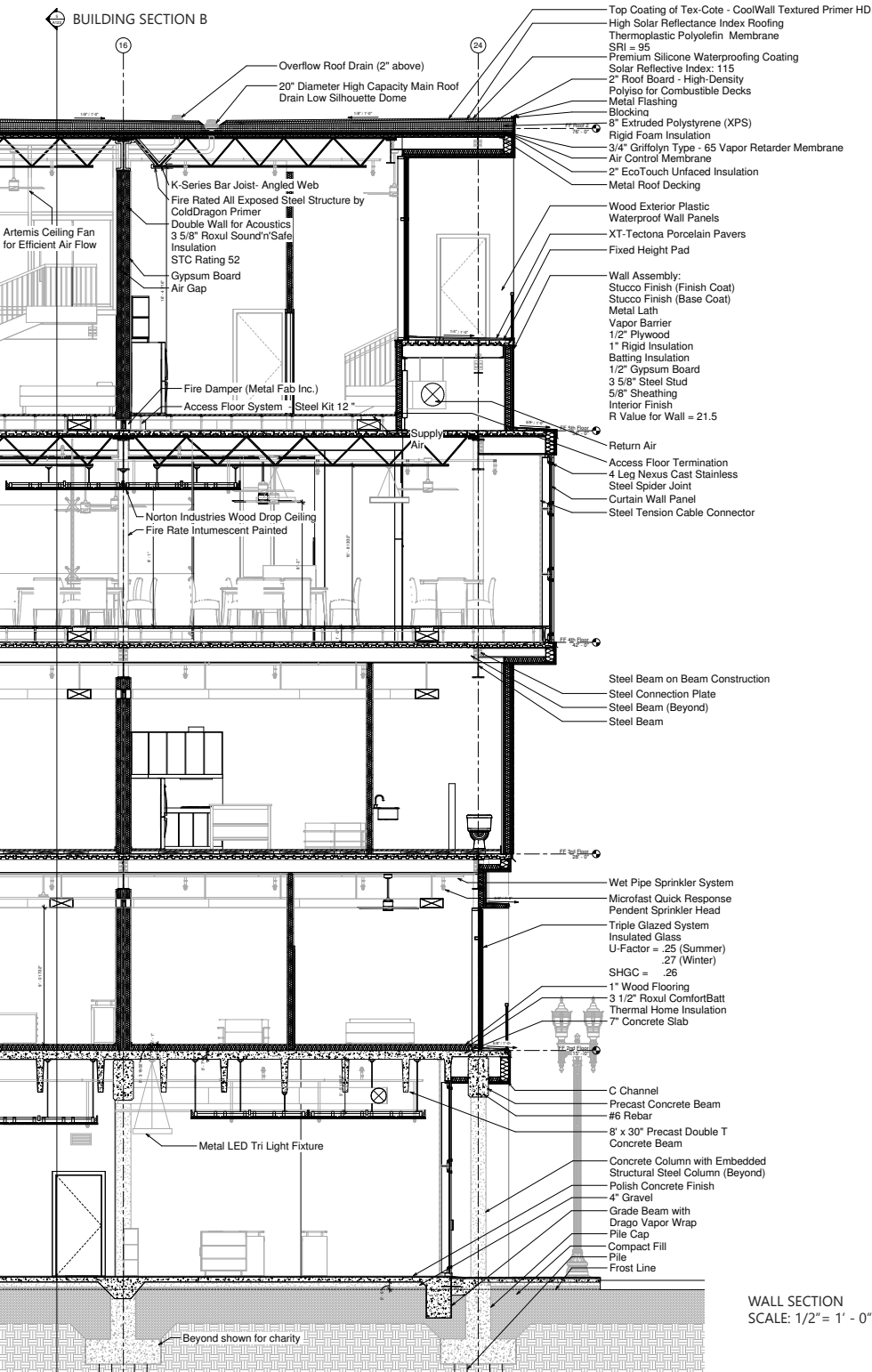


GROUND



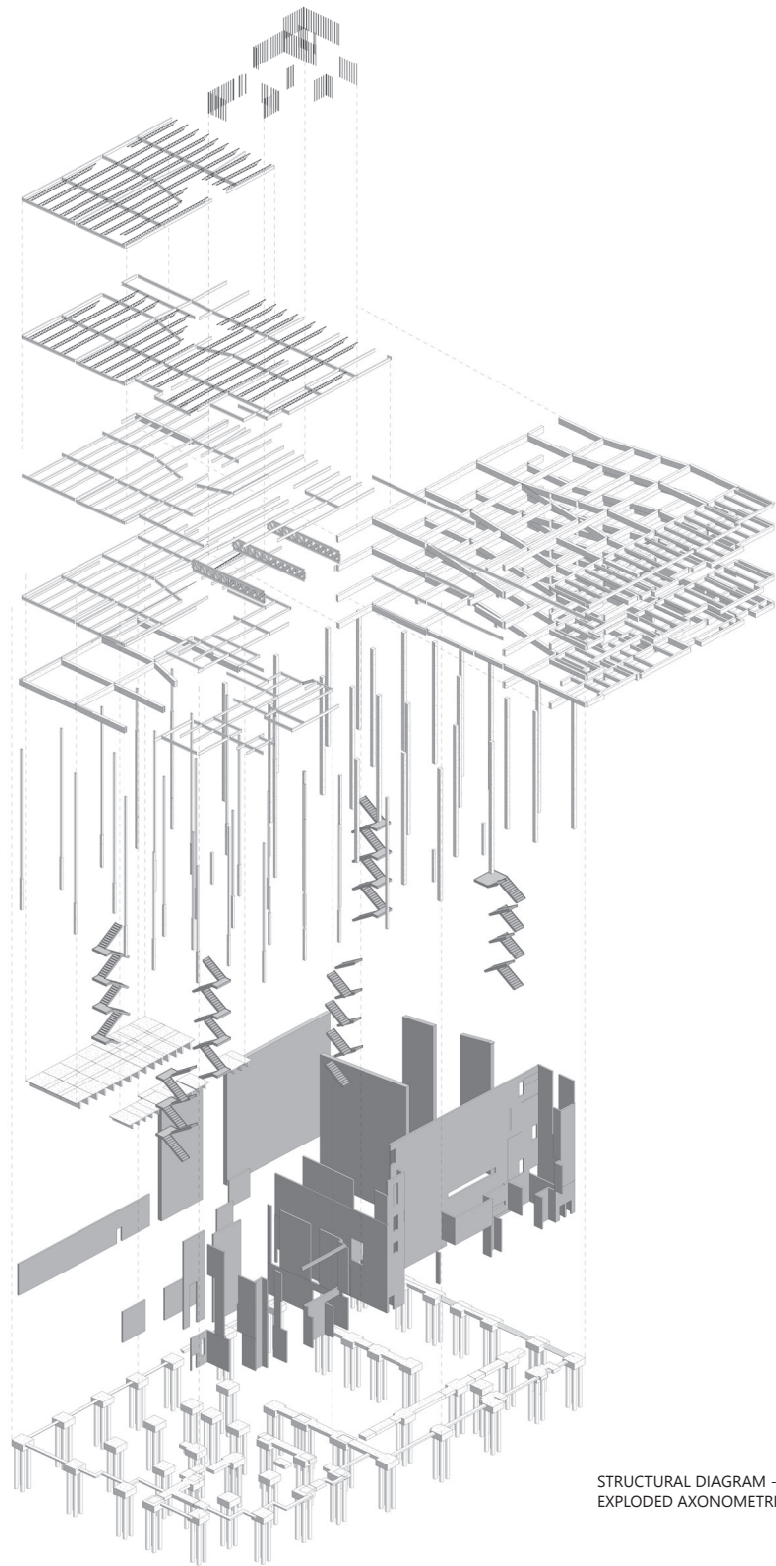
BUILDING SECTION B

R Value of Roof = 59.7

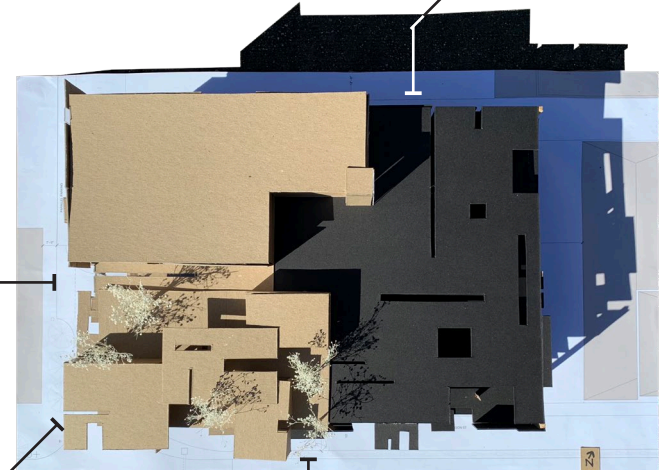
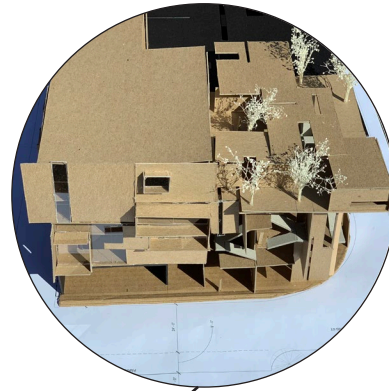


- Top Coating of Tex-Cote - CoolWall Textured Primer HD
- High Solar Reflectance Index Roofing
- Thermoplastic Polyolefin Membrane
- SRI = 95
- Premium Silicone Waterproofing Coating
- Solar Reflective Index: 115
- 2" Roof Board - High-Density Polyiso for Combustible Decks
- Metal Flashing
- Blocking
- 8" Extruded Polystyrene (XPS) Rigid Foam Insulation
- 3/4" Griffolyn Type - 65 Vapor Retarder Membrane
- Air Control Membrane
- 2" EcoTouch Unfaced Insulation
- Metal Roof Decking
- Wood Exterior Plastic Waterproof Wall Panels
- XT-Tectona Porcelain Pavers
- Fixed Height Pad
- Wall Assembly:
 Stucco Finish (Finish Coat)
 Stucco Finish (Base Coat)
 Metal Lath
 Vapor Barrier
 1/2" Plywood
 1" Rigid Insulation
 Batting Insulation
 1/2" Gypsum Board
 3 5/8" Steel Stud
 5/8" Sheathing
 Interior Finish
 R Value for Wall = 21.5

WALL SECTION
 SCALE: 1/2" = 1' - 0"

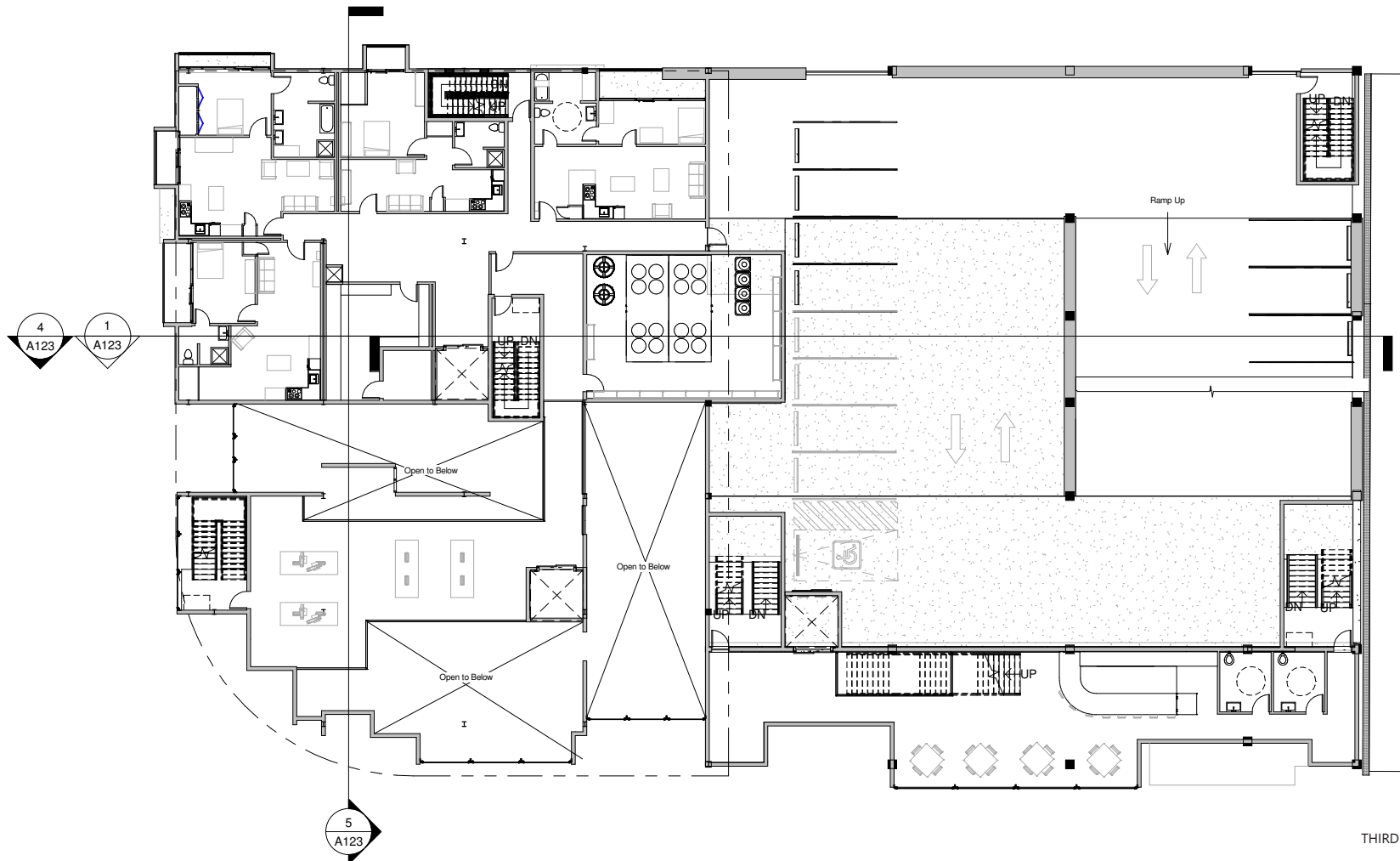


STRUCTURAL DIAGRAM -
EXPLODED AXONOMETRIC

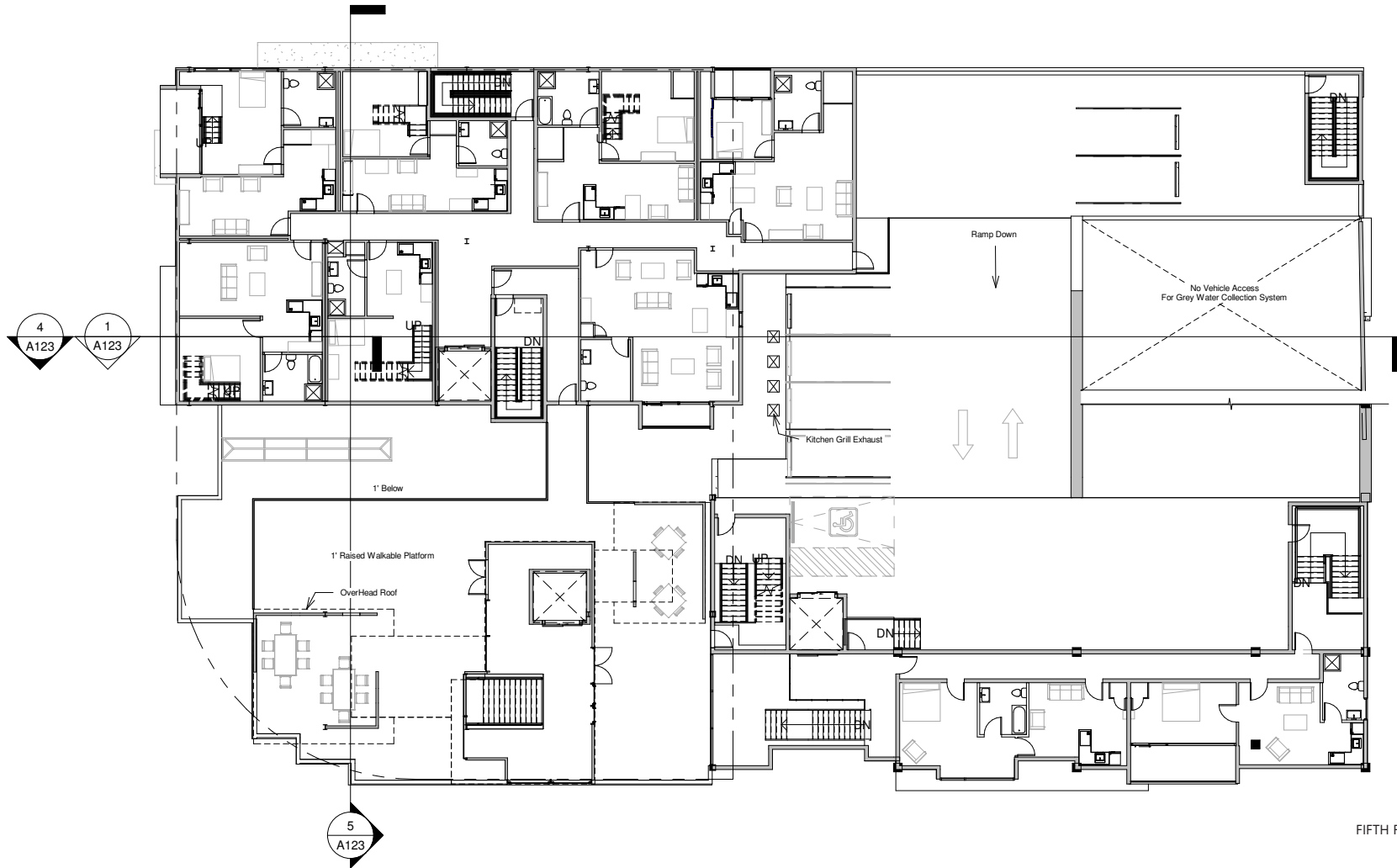


PLAN

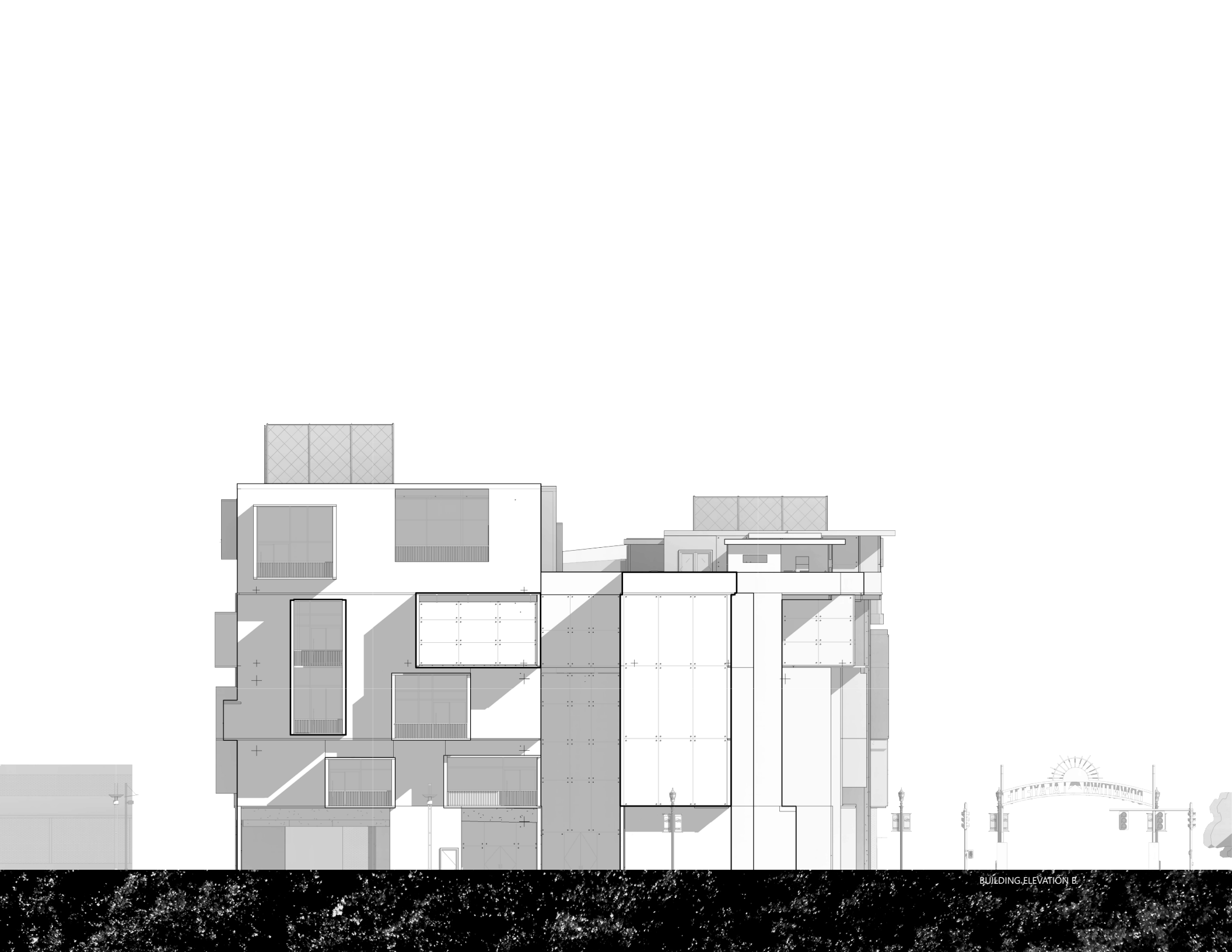




THIRD FLOOR



FIFTH FLOOR



BUILDING ELEVATION B