

INFINITY

Urban Mixed Use Development - Barack Obama Presidential Center

Chicago, IL

NOMA Student Design Competition 2018

Advisor: Kiwana McClung
 Team Members: David Allen, Sami Jaber, Breanna Booker, Mark Jones, Nguyen Son, Taisia Kolisnyk, Will Molock, Thad Perkins, Tylor Payne, Quoc Dang, Darrell Landry
 Contribution: Rendering, Graphic Style, And Competition Board Layout

BUILDING MORPHOLOGY
SAMI



VIEW FROM 63RD STREET TRANSIT PLATFORM
DAVID

Project Infinity has 178 residential units and can house up to 500 residents.

Upscale Units: 54
 High Mid-Range Units: 42
 Low Mid-Range Units: 26
 Micro Units: 56

The Total Enclosed Square Footage of Project Infinity is 388,694 SF.

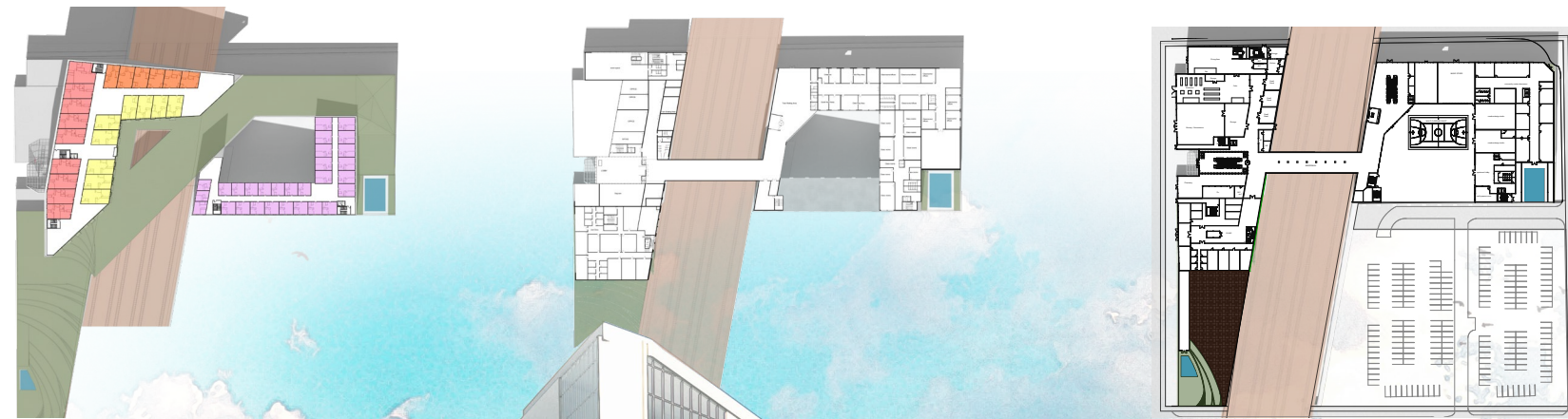
TRANSVERSE SECTION
DARRELL

The building has 103,751 SF dedicated to Residential space and 106,219 SF dedicated for Commercial space.

The land bridge contains approximately 88,693 SF of greenspace for residents to enjoy.

The project provides the residents of the Woodlawn community with 83,809 SF of community/ recreational space.

Water Retention areas hold 6,410 Cubic FT (47,946 Gallons) of water for use in the building's greywater system.



FOURTH

SECOND

GROUND
BREANNA AND TYLOR



Boundless optimism and practical strategies define the proposal for the woodlawn neighborhood on the south side of chicago.

The multidimensional and economically diverse development include the creation of multi-modal transit center to connect woodlawn residents to the greater city of chicago and the creation of lease space for new, local businesses along with open greenspaces and new healthy living and working opportunities.

Middle Render: View of the Street Entrance to the Green Landbridge from Southwest corner of the Site - Darrell

VIEW FROM INSIDE THE COMMUNITY COURTYARD
DAVID